

Weights and Weight Sets

Simplifying Progress



Su proveedor de confianza

SARTORIUS

Table of Contents

From Weights to Certified Testing Services	4–5
Your DAkkS Partner for Mass	6–7
Reference Line Weights	8–11
Reference Line Weight Sets	12–13
Proof Line Weights	14–19
Proof Line Weight Sets	20–21
Special and Service Weight Sets	22–23
Cylindrical Weights	24–25
Accessories	26–27
Maximum Permissible Errors for Weights	28–29
Weight Set Combinations	30–31





From Weights to Certified Testing Services

The Complete Line

Regular inspection and testing of weighing instruments are essential to ensure reliable weighing results. Sartorius offers highly accurate metrological weights and weight sets with nominal mass values from 1 mg to 1,000 kg, special and test weights, as well as the right accessories required for correct handling, storage and cleaning of weights.

For unique identification and classification, all Sartorius weights – except for wire and leaf weights – are laser-engraved with an individual three-character alphanumeric marking in accordance with the OIML R111-1 International Recommendation. Therefore, Sartorius weights are 100% traceable throughout their entire life cycles. On weights made of cast iron, this unique marking is stamped on the cover plate.



The Perfect Test Weight for Your Weighing Instrument

Here's how to find the right weight

Just determine the number of digits specified for your weighing instrument's resolution, then check the graph below for the particular accuracy class that your weight must have.

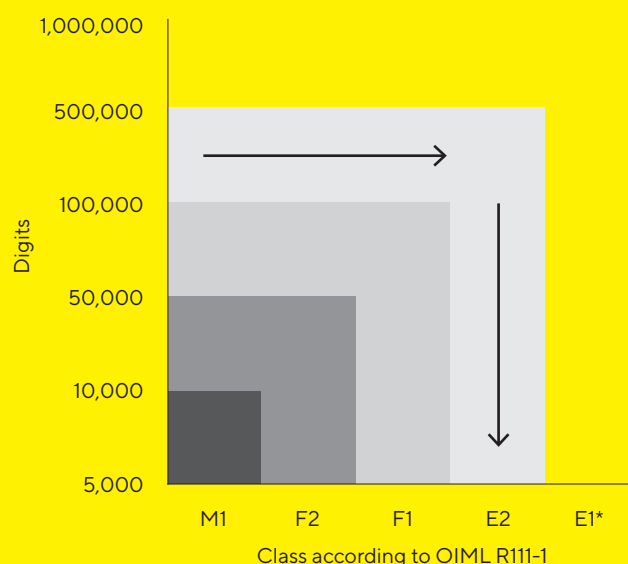
The nominal mass value of your weight should be more than 80% of the maximum capacity of your weighing instrument.

Use the diagram below to determine whether you need an individual weight or a weight set by comparing the nominal mass values.



Example:

Suppose your weighing instrument has a maximum capacity of 2,200 g and a readability of 0.01 g. This yields 220,000 digits, which correspond to a class E2 weight. Select 2,000 g as the nominal mass value.



$$n = \frac{\text{Max [mg]}}{d \text{ [mg]}}$$

n = resolution of your weighing instrument (in digits)

Max = maximum capacity of your weighing instrument

d = readability of your weighing instrument

* or E2, DAkkS-calibrated

Your DAkkS Partner for Mass

Sartorius has calibration laboratories for weights and weighing instruments. These calibration laboratories are accredited by the DAkkS* and meet the International Standard ISO IEC 17025, which is also recognized throughout Europe as a European Standard (EN ISO IEC 17025). Thus, weights calibrated by Sartorius are traceable to your national standard.

DAkkS assessments are made according to the applicable requirements and the corresponding rules of the European Co-operation for Accreditation (EA), the International Accreditation Forum (IAF) and the International Laboratory Accreditation Cooperation (ILAC).

* German accreditation body for calibration, testing, inspection, certification of quality, products and services, etc.



Recalibration of all Weights, Manufacturer Brands and Designs

Depending on how frequently weights are used and which accuracy is required, they must be recalibrated at regular intervals so that they meet the requirements for reliable measuring, inspection and test equipment. Sartorius offers recalibration service with DAkkS calibration certificates for all weights, regardless of class, design or brand.



Your local Sartorius Service Center will provide you with information on our recalibration service.

If you are located in Europe,
please send your weights to:

Sartorius Lab Instruments GmbH & Co. KG
DAkkS Calibration Laboratory
Otto-Brenner-Strasse 20
37079 Goettingen, Germany

Reference Line Weights

Sartorius Reference Line weights are the first choice for primary mass standards. They are supplied with a first-class finish featuring high gloss polished and corrosion-resistant surfaces. The quality of these weights exceeds the requirements of the OIML R111-1 International Recommendation. Sartorius Reference Line weights have only positive deviations from the nominal mass value*.

OIML class E1 and E2 weights from 1 mg to 500 mg are available as wire weights; those with a nominal mass of 1 g and higher are designed as knob weights. They are manufactured from special stainless steel that has a density of $8,000 \text{ kg/m}^3$ ($7,950 \text{ kg/m}^3$ for class E2) and comply with OIML R111-1 tolerances. The weights are non-magnetizable and are delivered in a high-quality wooden case**.

* Valid at the time of delivery and taking into account the positive measuring uncertainty value

** Unless otherwise specified





	Without DAkkS calibration certificate		With DAkkS calibration certificate	
Nominal Value	OIML Class E1	OIML Class E2	OIML Class E1	OIML Class E2
1 mg	YCW0111-00	YCW0121-00	YCW0111-02	YCW0121-02
2 mg	YCW0211-00	YCW0221-00	YCW0211-02	YCW0221-02
5 mg	YCW0511-00	YCW0521-00	YCW0511-02	YCW0521-02
10 mg	YCW1111-00	YCW1121-00	YCW1111-02	YCW1121-02
20 mg	YCW1211-00	YCW1221-00	YCW1211-02	YCW1221-02
50 mg	YCW1511-00	YCW1521-00	YCW1511-02	YCW1521-02
100 mg	YCW2111-00	YCW2121-00	YCW2111-02	YCW2121-02
200 mg	YCW2211-00	YCW2221-00	YCW2211-02	YCW2221-02
500 mg	YCW2511-00	YCW2521-00	YCW2511-02	YCW2521-02
1 g	YCW3111-00	YCW3121-00	YCW3111-02	YCW3121-02
2 g	YCW3211-00	YCW3221-00	YCW3211-02	YCW3221-02
5 g	YCW3511-00	YCW3521-00	YCW3511-02	YCW3521-02
10 g	YCW4111-00	YCW4121-00	YCW4111-02	YCW4121-02
20 g	YCW4211-00	YCW4221-00	YCW4211-02	YCW4221-02
50 g	YCW4511-00	YCW4521-00	YCW4511-02	YCW4521-02
100 g	YCW5111-00	YCW5121-00	YCW5111-02	YCW5121-02
200 g	YCW5211-00	YCW5221-00	YCW5211-02	YCW5221-02
500 g	YCW5511-00	YCW5521-00	YCW5511-02	YCW5521-02
1 kg	YCW6111-00	YCW6121-00	YCW6111-02	YCW6121-02
2 kg	YCW6211-00	YCW6221-00	YCW6211-02	YCW6221-02
5 kg	YCW6511-00	YCW6521-00	YCW6511-02	YCW6521-02
10 kg	YCW7111-00	YCW7121-00	YCW7111-02	YCW7121-02
20 kg	YCW7211-00	YCW7221-00	YCW7211-02	YCW7221-02
50 kg	YCW7511-00	YCW7521-00	YCW7511-02	YCW7521-02

Reference Line Weights

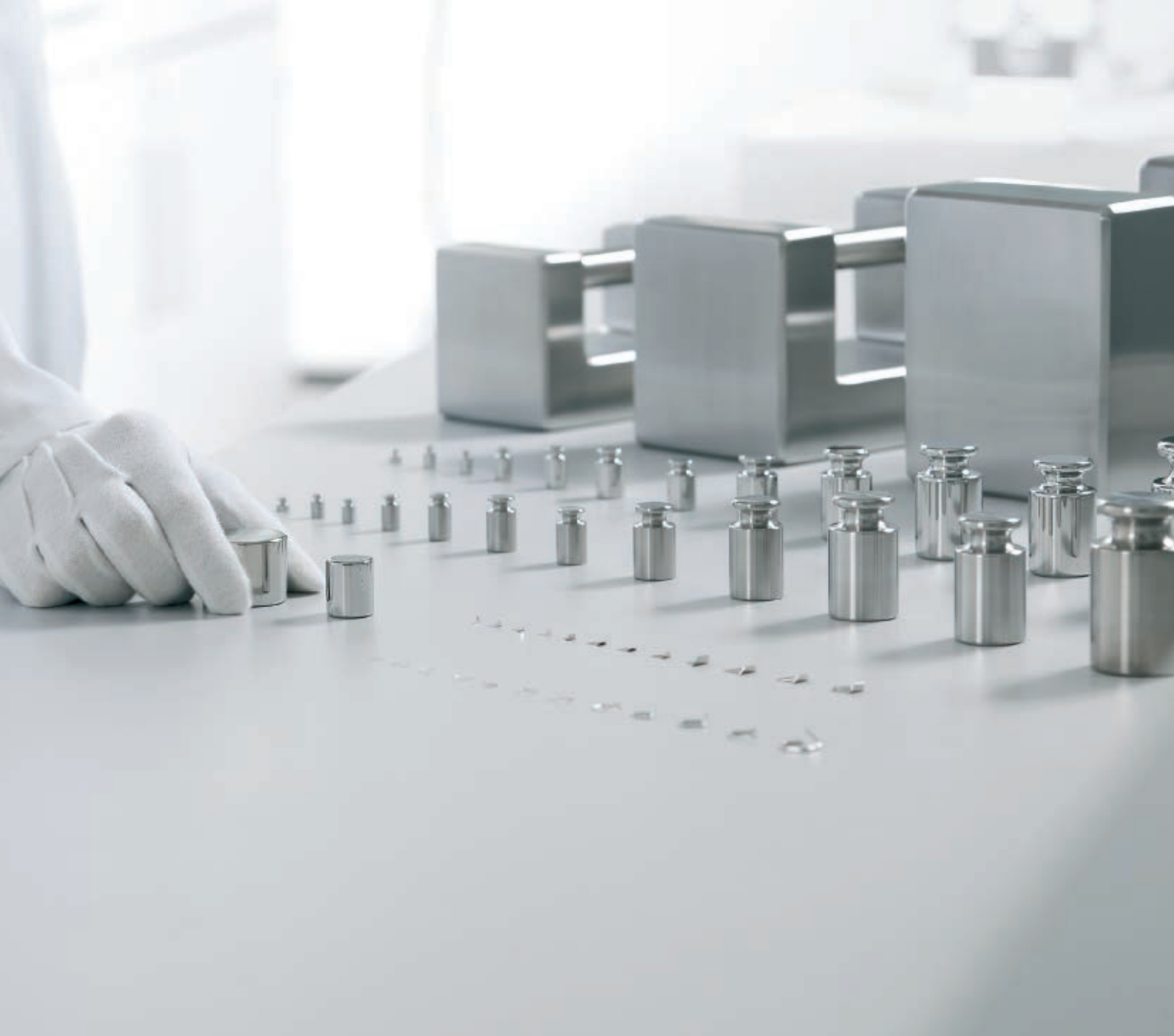
Sartorius Reference Line milligram weights of OIML class F1 are designed as wire weights. These weights are made of stainless steel that has a density of 7,950 kg/m³. The tolerances comply with OIML R111-1.

The weights are non-magnetizable and, up to 20 g, come in a plastic case. Starting at 50 g, they are supplied in a high-quality wooden case*.

* Unless otherwise specified

OIML class F1 and F2 weights with nominal values of 1 g and higher are available as knob weights and made of special stainless steel that has a density of 7,950 kg/m³. Their tolerances likewise comply with OIML R111-1.

Nominal Value	Without DAkkS calibration certificate		With DAkkS calibration certificate	
	OIML Class F1	OIML Class F2	OIML Class F1	OIML Class F2
1 mg	YCW0131-00	-	YCW0131-02	-
2 mg	YCW0231-00	-	YCW0231-02	-
5 mg	YCW0531-00	-	YCW0531-02	-
10 mg	YCW1131-00	-	YCW1131-02	-
20 mg	YCW1231-00	-	YCW1231-02	-
50 mg	YCW1531-00	-	YCW1531-02	-
100 mg	YCW2131-00	-	YCW2131-02	-
200 mg	YCW2231-00	-	YCW2231-02	-
500 mg	YCW2531-00	-	YCW2531-02	-
1 g	YCW313-00	YCW314-00	YCW313-02	YCW314-02
2 g	YCW323-00	YCW324-00	YCW323-02	YCW324-02
5 g	YCW353-00	YCW354-00	YCW353-02	YCW354-02
10 g	YCW413-00	YCW414-00	YCW413-02	YCW414-02
20 g	YCW423-00	YCW424-00	YCW423-02	YCW424-02
50 g	YCW453-00	YCW454-00	YCW453-02	YCW454-02
100 g	YCW513-00	YCW514-00	YCW513-02	YCW514-02
200 g	YCW523-00	YCW524-00	YCW523-02	YCW524-02
500 g	YCW553-00	YCW554-00	YCW553-02	YCW554-02
1 kg	YCW613-00	YCW614-00	YCW613-02	YCW614-02
2 kg	YCW623-00	YCW624-00	YCW623-02	YCW624-02
5 kg	YCW653-00	YCW654-00	YCW653-02	YCW654-02
10 kg	YCW713-00	YCW714-00	YCW713-02	YCW714-02
20 kg	YCW723-00	YCW724-00	YCW723-02	YCW724-02
50 kg	YCW753-00	YCW754-00	YCW753-02	YCW754-02



OIML class F1 and F2 cylindrical weights with a lug are made of a special stainless steel that has a density of $7,950 \text{ kg/m}^3$, and their tolerances comply with OIML R111-1. The weights are delivered in a wooden case suitable for transportation by a pallet mover.



Without DAkkS calibration certificate		
Nominal Value	OIML Class F1	OIML Class F2
100 kg	YCW813-00	YCW814-00
200 kg	YCW823-00	YCW824-00
500 kg	YCW853-00	YCW854-00
1,000 kg	YCW913-00	YCW914-00
With DAkkS calibration certificate		
100 kg	YCW813-02	YCW814-02
200 kg	YCW823-02	YCW824-02
500 kg	YCW853-02	YCW854-02
1,000 kg	YCW913-02	YCW914-02

Reference Line Weights Sets

The weights of the Sartorius Reference Line sets* have the same features and properties as the individual weights of this series, along with the corresponding maximum permissible errors. These weight sets are supplied with gloves, tweezers and a brush in a high-quality wooden case.

OIML class E1 weights in the Reference Line sets are made of special stainless steel that has a density of 8,000 kg/m³, and their tolerances comply with OIML R111-1. Reference Line sets with nominal mass values up to 500 mg feature a wire weight shape.

OIML class F1, F2 and E2 weights of Reference Line sets are made of special stainless steel that has a density of 7,950 kg/m³. Their tolerances comply with OIML R111-1.

OIML class F1 and E2 Reference Line weight sets contain wire weights with nominal values of up to 500 mg; those of OIML class F2 have leaf weights instead and nominal values of up to 500 mg.

Reference Line sets with leaf weights from 1 mg to 5 mg are made of aluminum that has a density of 2,650 kg/m³; those with weights from 10 mg to 500 mg are made of nickel silver with a density of 8,600 kg/m³. Their tolerances comply with OIML R111-1.

* For a list of individual weight combinations in each set, see page 30–31.

Nominal Value	Without DAkkS calibration certificate		With DAkkS calibration certificate	
	OIML Class E1	OIML Class E2	OIML Class E1	OIML Class E2
1 mg – 5 g	YCS011-351-00	YCS011-352-00	YCS011-351-02	YCS011-352-02
1 mg – 100 g	YCS011-511-00	YCS011-512-00	YCS011-511-02	YCS011-512-02
1 mg – 200 g	YCS011-521-00	YCS011-522-00	YCS011-521-02	YCS011-522-02
1 mg – 1 kg	YCS011-611-00	YCS011-612-00	YCS011-611-02	YCS011-612-02
1 mg – 5 kg	YCS011-651-00	YCS011-652-00	YCS011-651-02	YCS011-652-02
1 g – 1 kg	YCS31-611-00	YCS31-612-00	YCS31-611-02	YCS31-612-02
1 g – 5 kg	YCS31-651-00	YCS31-652-00	YCS31-651-02	YCS31-652-02
1 g – 10 kg	YCS31-711-00	YCS31-712-00	YCS31-711-02	YCS31-712-02

Nominal Value	Without DAkkS calibration certificate		With DAkkS calibration certificate	
	OIML Class F1	OIML Class F2	OIML Class F1	OIML Class F2
1 mg – 100 g	YCS01-513-00	YCS01-514-00	YCS01-513-02	YCS01-514-02
1 mg – 200 g	YCS01-523-00	YCS01-524-00	YCS01-523-02	YCS01-524-02
1 mg – 1 kg	YCS01-613-00	YCS01-614-00	YCS01-613-02	YCS01-614-02
1 mg – 5 kg	YCS01-653-00	YCS01-654-00	YCS01-653-02	YCS01-654-02
1 g – 1 kg	YCS31-613-00	YCS31-614-00	YCS31-613-02	YCS31-614-02
1 g – 5 kg	YCS31-653-00	YCS31-654-00	YCS31-653-02	YCS31-654-02
1 g – 10 kg	YCS31-713-00	YCS31-714-00	YCS31-713-02	YCS31-714-02



Proof Line Weights

Sartorius Proof Line weights are highquality working standards for everyday use. These weights are made of high quality material with polished or precision-lathed surfaces and comply in all respects with the requirements on shape, material and markings specified by the OIML R111-1 International Recommendation.

OIML class E2 milligram weights are designed as leaf weights. With a nominal mass ranging from 1 mg to 5 mg, these weights are made of aluminum that has a density of 2,650 kg/m³; those with nominal values ranging from 10 mg to 500 mg are manufactured from nickel silver with a density of 8,600 kg/m³. Their tolerances comply with OIML R111-1.

Weights with nominal values of 1 g and higher are available as knob weights and are made of a special stainless steel that has a density of 7,950 kg/m³. Their tolerances comply with OIML R111-1. Proof Line weights are non-magnetizable and supplied in a high-quality plastic case*. These plastic cases are suitable for use in cleanrooms.

* Unless otherwise specified

	Without DAkkS calibration certificate	With DAkkS calibration certificate
Nominal Value	OIML Class E2	OIML Class E2
1 mg	YCW0121-AC-00	YCW0121-AC-02
2 mg	YCW0221-AC-00	YCW0221-AC-02
5 mg	YCW0521-AC-00	YCW0521-AC-02
10 mg	YCW1121-AC-00	YCW1121-AC-02
20 mg	YCW1221-AC-00	YCW1221-AC-02
50 mg	YCW1521-AC-00	YCW1521-AC-02
100 mg	YCW2121-AC-00	YCW2221-AC-02
200 mg	YCW2221-AC-00	YCW2121-AC-02
500 mg	YCW2521-AC-00	YCW2521-AC-02
1 g	YCW312-AC-00	YCW312-AC-02
2 g	YCW322-AC-00	YCW322-AC-02
5 g	YCW352-AC-00	YCW352-AC-02
10 g	YCW412-AC-00	YCW412-AC-02
20 g	YCW422-AC-00	YCW422-AC-02
50 g	YCW452-AC-00	YCW452-AC-02
100 g	YCW512-AC-00	YCW512-AC-02
200 g	YCW522-AC-00	YCW522-AC-02
500 g	YCW552-AC-00	YCW552-AC-02
1 kg	YCW612-AC-00	YCW612-AC-02
2 kg	YCW622-AC-00	YCW622-AC-02
5 kg	YCW652-AC-00	YCW652-AC-02
10 kg	YCW712-AC-00	YCW712-AC-02



Sartorius Proof Line knob weights of OIML classes F1 and F2 with nominal values of 1 g and higher are made of stainless steel that has a density of 7,950 kg/m³. The tolerances of these knob weights comply with OIML R111-1, and they are supplied in high-quality plastic screw-top boxes. Knob weights from 5 g and up feature an adjustment chamber.

Proof Line OIML class F1 leaf weights ranging from 1 mg to 5 mg are made of aluminum that has a density of 2,650 kg/m³; those with nominal values from 10 mg to 500 mg are manufactured from nickel silver that has a density of 8,600 kg/m³. Their tolerances comply with OIML R111-1.

Milligram weights of the Proof Line range are delivered in a high-quality plastic case. These plastic cases are suitable for use in cleanrooms.

Nominal Value	Without DAkkS calibration certificate		With DAkkS calibration certificate	
	OIML Class F1	OIML Class F2	OIML Class F1	OIML Class F2
1 mg	YCW013-00	-	YCW013-02	-
2 mg	YCW023-00	-	YCW023-02	-
5 mg	YCW053-00	-	YCW053-02	-
10 mg	YCW113-00	-	YCW113-02	-
20 mg	YCW123-00	-	YCW123-02	-
50 mg	YCW153-00	-	YCW153-02	-
100 mg	YCW213-00	-	YCW213-02	-
200 mg	YCW223-00	-	YCW223-02	-
500 mg	YCW253-00	-	YCW253-02	-
1 g	YCW313-AC-00	YCW314-AC-00	YCW313-AC-02	YCW314-AC-02
2 g	YCW323-AC-00	YCW324-AC-00	YCW323-AC-02	YCW324-AC-02
5 g	YCW353-AC-00	YCW354-AC-00	YCW353-AC-02	YCW354-AC-02
10 g	YCW413-AC-00	YCW414-AC-00	YCW413-AC-02	YCW414-AC-02
20 g	YCW423-AC-00	YCW424-AC-00	YCW423-AC-02	YCW424-AC-02
50 g	YCW453-AC-00	YCW454-AC-00	YCW453-AC-02	YCW454-AC-02
100 g	YCW513-AC-00	YCW514-AC-00	YCW513-AC-02	YCW514-AC-02
200 g	YCW523-AC-00	YCW524-AC-00	YCW523-AC-02	YCW524-AC-02
500 g	YCW553-AC-00	YCW554-AC-00	YCW553-AC-02	YCW554-AC-02
1 kg	YCW613-AC-00	YCW614-AC-00	YCW613-AC-02	YCW614-AC-02
2 kg	YCW623-AC-00	YCW624-AC-00	YCW623-AC-02	YCW624-AC-02
5 kg	YCW653-AC-00	YCW654-AC-00	YCW653-AC-02	YCW654-AC-02
10 kg	YCW713-AC-00	YCW714-AC-00	YCW713-AC-02	YCW714-AC-02

Proof Line Weights

Sartorius Proof Line knob weights of OIML class M1 are made of stainless steel, precision-lathed and have a density of 7,850 kg/m³. Their tolerances comply with OIML R111-1.

OIML class M2 knob weights of the Sartorius Proof Line series are manufactured from brass, precision-lathed and have a density of 8,400 kg/m³.

Their tolerances comply with OIML R111-1. All Proof Line knob weights are supplied in high-quality plastic screw-top boxes that are suitable for use in cleanrooms. Knob weights from 5 g and up feature an adjustment chamber.



Without DAkkS calibration certificate		
Nominal Value	OIML Class M1	OIML Class M2
1 g	YCW315-AC-00	YCW316-AC-00
2 g	YCW325-AC-00	YCW326-AC-00
5 g	YCW355-AC-00	YCW356-AC-00
10 g	YCW415-AC-00	YCW416-AC-00
20 g	YCW425-AC-00	YCW426-AC-00
50 g	YCW455-AC-00	YCW456-AC-00
100 g	YCW515-AC-00	YCW516-AC-00
200 g	YCW525-AC-00	YCW526-AC-00
500 g	YCW555-AC-00	YCW556-AC-00
1 kg	YCW615-AC-00	YCW616-AC-00
2 kg	YCW625-AC-00	YCW626-AC-00
5 kg	YCW655-AC-00	YCW656-AC-00
10 kg	YCW715-AC-00	YCW716-AC-00
With DAkkS calibration certificate		
1 g	YCW315-AC-02	YCW316-AC-02
2 g	YCW325-AC-02	YCW326-AC-02
5 g	YCW355-AC-02	YCW356-AC-02
10 g	YCW415-AC-02	YCW416-AC-02
20 g	YCW425-AC-02	YCW426-AC-02
50 g	YCW455-AC-02	YCW456-AC-02
100 g	YCW515-AC-02	YCW516-AC-02
200 g	YCW525-AC-02	YCW526-AC-02
500 g	YCW555-AC-02	YCW556-AC-02
1 kg	YCW615-AC-02	YCW616-AC-02
2 kg	YCW625-AC-02	YCW626-AC-02
5 kg	YCW655-AC-02	YCW656-AC-02
10 kg	YCW715-AC-02	YCW716-AC-02



Proof Line Weights

OIML M1 and M2 block weights and ton weights of the Proof Line series are made of cast iron that is black lacquered and has a density of 7,200 kg/m³. Their tolerances comply with OIML R111-1.

Proof Line OIML class M1 block weights are also available in a choice of stainless steel that has a density of 7,850 kg/m³. Their tolerances comply with OIML R111-1.

Cases are available in a choice of designs on request.

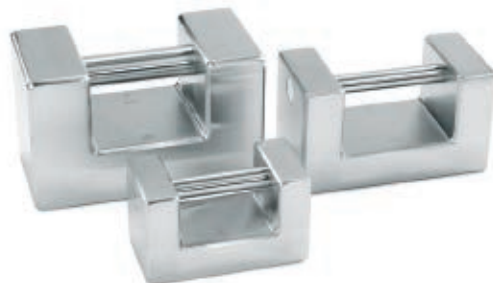
Block weights, cast iron

Without DAkkS calibration certificate		
Nominal Value	OIML Class M1	OIML Class M2
5 kg	YCW6559-AC-00	YCW6569-AC-00
10 kg	YCW7159-AC-00	YCW7169-AC-00
20 kg	YCW7259-AC-00	YCW7269-AC-00
50 kg	YCW7559-AC-00	YCW7569-AC-00
With DAkkS calibration certificate		
	OIML Class M1	OIML Class M2
5 kg	YCW6559-AC-02	YCW6569-AC-02
10 kg	YCW7159-AC-02	YCW7169-AC-02
20 kg	YCW7259-AC-02	YCW7269-AC-02
50 kg	YCW7559-AC-02	YCW7569-AC-02



Block weights, stainless steel

Without DAkkS calibration certificate		
Nominal Value	OIML Class M1	OIML Class M2
5 kg	YCW6554-AC-00	-
10 kg	YCW7154-AC-00	-
20 kg	YCW7254-AC-00	-
50 kg	YCW7554-AC-00	-
With DAkkS calibration certificate		
	OIML Class M1	OIML Class M2
5 kg	YCW6554-AC-02	-
10 kg	YCW7154-AC-02	-
20 kg	YCW7254-AC-02	-
50 kg	YCW7554-AC-02	-





Block weights, cast iron

Without DAkkS calibration certificate		
Nominal Value	OIML Class M1	OIML Class M2
100 kg	YCW8159-AC-00	-
200 kg	YCW8259-AC-00	-
500 kg	YCW8559-AC-00	-
1,000 kg	YCW9159-AC-00	-
With DAkkS calibration certificate		
	OIML Class M1	OIML Class M2
100 kg	YCW8159-AC-02	-
200 kg	YCW8259-AC-02	-
500 kg	YCW8559-AC-02	-
1,000 kg	YCW9159-AC-02	-



Ton weights, cast iron

Without DAkkS calibration certificate		
Nominal Value	OIML Class M1	OIML Class M2
100 kg	YCW8157-AC-00	-
200 kg	YCW8257-AC-00	-
500 kg	YCW8557-AC-00	-
1,000 kg	YCW9157-AC-00	-
With DAkkS calibration certificate		
	OIML Class M1	OIML Class M2
100 kg	YCW8157-AC-02	-
200 kg	YCW8257-AC-02	-
500 kg	YCW8557-AC-02	-
1,000 kg	YCW9157-AC-02	-



Proof Line Weights Sets

The weights of the Sartorius Proof Line weight sets* have the same features and properties as the individual weights of this series, along with the corresponding maximum permissible errors.

These weight sets are supplied with gloves, tweezers and a brush in a highquality plastic case.

All milligram weights are provided as leaf weights. With nominal mass values ranging from 1 mg to 5 mg, they are made of aluminum that has a density of 2,650 kg/m³; weights with nominal values of 10 mg to 500 mg are made of nickel silver that has a density of 8,600 kg/m³. Their tolerances comply with OIML R111-1.



* For a list of individual weight combinations in each set, see page 30 – 31.

Without DAkkS calibration certificate				
Nominal Value	OIML Class E2	OIML Class F1	OIML Class F2	OIML Class M1
1 mg – 500 mg	YCS011-252-AC-00	YCS01-253-AC-00	YCS01-254-AC-00	YCS01-255-AC-00
1 mg – 100 g	-	-	-	YCS01-515-AC-00
1 mg – 200 g	-	-	-	YCS01-525-AC-00
1 mg – 1 kg	-	-	-	YCS01-615-AC-00
1 mg – 5 kg	-	-	-	YCS01-655-AC-00
1 g – 100 g	YCS31-512-AC-00	YCS31-513-AC-00	YCS31-514-AC-00	YCS31-515-AC-00
1 g – 200 g	YCS31-522-AC-00	-	-	-
1 g – 1 kg	YCS31-612-AC-00	YCS31-613-AC-00	YCS31-614-AC-00	YCS31-615-AC-00
1 g – 5 kg	YCS31-652-AC-00	YCS31-653-AC-00	YCS31-654-AC-00	YCS31-655-AC-00
1 g – 10 kg	-	-	-	YCS31-715-AC-00
With DAkkS calibration certificate				
	OIML Class E2	OIML Class F1	OIML Class F2	OIML Class M1
1 mg – 500 mg	YCS011-252-AC-02	YCS01-253-AC-02	YCS01-254-AC-02	YCS01-255-AC-02
1 mg – 100 g	-	-	-	YCS01-515-AC-02
1 mg – 200 g	-	-	-	YCS01-525-AC-02
1 mg – 1 kg	-	-	-	YCS01-615-AC-02
1 mg – 5 kg	-	-	-	YCS01-655-AC-02
1 g – 100 g	YCS31-512-AC-02	YCS31-513-AC-02	YCS31-514-AC-02	YCS31-515-AC-02
1 g – 200 g	YCS31-522-AC-02	-	-	-
1 g – 1 kg	YCS31-612-AC-02	YCS31-613-AC-02	YCS31-614-AC-02	YCS31-615-AC-02
1 g – 5 kg	YCS31-652-AC-02	YCS31-653-AC-02	YCS31-654-AC-02	YCS31-655-AC-02
1 g – 10 kg	-	-	-	YCS31-715-AC-02



Special Weight Sets and Service Weight Sets

All weights of the Sartorius service weight sets* have the same features and properties as the individual weights of the Sartorius Reference Line series, along with the corresponding maximum permissible errors. These service weight sets are supplied with gloves, tweezers and a brush in a service case.

* For a list of individual weight combinations in each set, see page 30–31.

** Consisting of cylindrical weights

	Without DAkkS calibration certificate	With DAkkS calibration certificate
Nominal Value	OIML Class E2	OIML Class E2
1 mg – 5 kg	YSS0121-353-00	YSS0121-353-02
100 g – 5 kg**	YSS5128-6528-00	YSS5128-6528-02
	OIML Class F1	OIML Class F1
1 g – 5 kg**	YSS3138-6538-00	YSS3138-6538-02



The Sartorius density reference set* consists of stackable disc weights. All weights are made of special stainless steel that has a density of 8,000 kg/m³. Their tolerances comply with OIML R111-1. Density reference weights are non-magnetizable and are supplied in a high-quality wooden case with a calibration certificate, which includes density determination data.

* For weight set compositions, see page 30 – 31.

Density Reference Set	
Nominal Value	OIML Class E1
1 g – 1 kg	YCS31-612-09



Cylindrical Weights

Sartorius cylindrical weights of OIML classes E2, F1 and F2 are made of special stainless steel that has a density of 7,950 kg/m³. Their tolerances comply with OIML R111-1.

These weights are non-magnetizable and have a polished surface. They are supplied in high-quality plastic cases that are suitable for use in cleanrooms.



Without DAkkS calibration certificate			
Nominal Value	OIML Class E2	OIML Class F1	OIML Class F2
1 g	YCW3128-00	YCW3138-00	-
2 g	YCW3228-00	YCW3238-00	-
5 g	YCW3528-00	YCW3538-00	-
10 g	YCW4128-00	YCW4138-00	-
20 g	YCW4228-00	YCW4238-00	-
50 g	YCW4528-00	YCW4538-00	-
100 g	YCW5128-00	YCW5138-00	YCW5148-00
200 g	YCW5228-00	YCW5238-00	YCW5248-00
500 g	YCW5528-00	YCW5538-00	YCW5548-00
1 kg	YCW6128-00	YCW6138-00	YCW6148-00
2 kg	YCW6228-00	YCW6238-00	YCW6248-00
5 kg	YCW6528-00	YCW6538-00	YCW6548-00
10 kg	-	YCW7138-00	YCW7148-00
With DAkkS calibration certificate			
1 g	YCW3128-02	YCW3138-02	-
2 g	YCW3228-02	YCW3238-02	-
5 g	YCW3528-02	YCW3538-02	-
10 g	YCW4128-02	YCW4138-02	-
20 g	YCW4228-02	YCW4238-02	-
50 g	YCW4528-02	YCW4538-02	-
100 g	YCW5128-02	YCW5138-02	YCW5148-02
200 g	YCW5228-02	YCW5238-02	YCW5248-02
500 g	YCW5528-02	YCW5538-02	YCW5548-02
1 kg	YCW6128-02	YCW6138-02	YCW6148-02
2 kg	YCW6228-02	YCW6238-02	YCW6248-02
5 kg	YCW6528-02	YCW6538-02	YCW6548-02
10 kg	-	YCW7138-02	YCW7148-02



Accessories

For Cleaning and Handling of Weights

According to the OIML R111-1 International Recommendation, special care must be taken in handling weights. Sartorius supplies a wide range of work-saving accessories to enable you to meet such special requirements.

To ensure correct handling and cleaning of weights, Sartorius offers brushes, gloves and handling tools in various designs and sizes.

For proper storage of weights, Sartorius provides glass bell jars and plastic screwtop boxes in different sizes. Wooden and plastic cases are available in a choice of designs on request.



Accessories		Order No.
Air bellow		YAW20
Brush	Small, 100 mm	YAW11
	Medium, 115 mm	YAW12
	Large, 150 mm	YAW13
	Extra large, 250 mm	YAW14
Gloves	Cotton	YAW21
	Leather	YAW22
Forceps with silicone-coated tips	115 mm for 1 mg – 5 g	YAW31
	160 mm for 1 g – 200 g	YAW32
	230 mm for 1 g – 1 kg	YAW33
Tweezers with carbon tips	105 mm for 1 mg – 5 g	YAW35
	115 mm for 1 mg – 5 g	YAW36
	160 mm for 1 g – 200 g	YAW37
	230 mm for 1 g – 1 kg	YAW38
Weight forks	For 500 g	YAW41
	For 1 kg	YAW42
	For 2 kg	YAW43
Weight fork, Fo(u)rk brand Fork, complete incl. adapters	For 500 g – 5 kg	YAW70
Fork	For 1 kg and 5 kg	YAW71
Adapter	For 500 g	YAW72
	For 2 kg	YAW73
Handles for lifting weights	For 5 kg	YAW50
	For 10 kg	YAW51
	For 20 kg	YAW52
	For 50 kg	YAW53

For Storage of Weights



Accessories		Order No.
Glass bell jar with support plate	For 1 mg – 5 g	YAW00
	For 1 mg – 50 g (100 g or 200 g)	YAW01
	For 100 g – 1 kg (2 kg)	YAW02
	For 2 kg – 5 kg	YAW03
	For 10 kg	YAW04
	For 20 kg	YAW05
	For 50 kg	YAW06
Plastic screw-top boxes with closed-pore foam inlay are suitable for use in cleanrooms	For 1 mg – 100 mg weights	YAW01GL
	For 200 mg – 500 mg weights	YAW05GL
	For 1 g – 20 g weights*	YAW20GL
	For 50 g weights*	YAW50GL
	For 100 g weights*	YAW100GL
	For 200 g weights*	YAW200GL
	For 500 g weights*	YAW500GL
	For 1 kg weights*	YAW1000GL
	For 2 kg weights*	YAW2000GL
	For 5 kg weights*	YAW5000GL
	For 10 kg weights*	YAW10000GL
High-quality plastic case	For 1 mg up to max. 5 g weights	YAW51CR
High-quality plastic case with closed-pore foam inlay, suitable for use in cleanrooms	For 1 mg up to max. 500 g weights	YAW501CR
	For 1 mg up to max. 5 kg weights	YAW5001CR
Service case with closed-pore foam inlay, suitable for use in cleanrooms	For 1 mg up to max. 10 kg weights	YAW10001CR
Service case (3-level-case) with closed-pore foam inlay, suitable for use in cleanrooms	For 1 mg up to max. 5 kg weights	YAW5001SC
Service case with closed-pore foam inlay, suitable for use in cleanrooms	For 10 kg knob weights	YAW10000SC
	For 20 kg knob weights	YAW20000SC

* For knob weights only; for information on boxes for cylindrical weights, please contact Sartorius (same price)

Maximum Permissible Errors for Weights

According to OIML R111-1:2004

\pm in mg	Class								
Nominal Value	E1	E2	F1	F2	M1	M1-2	M2	M2-3	M3
1 mg	0.003	0.006	0.02	0.06	0.2				
2 mg	0.003	0.006	0.02	0.06	0.2				
5 mg	0.003	0.006	0.02	0.06	0.2				
10 mg	0.003	0.008	0.025	0.08	0.25				
20 mg	0.003	0.010	0.03	0.10	0.3				
50 mg	0.004	0.012	0.04	0.12	0.4				
100 mg	0.005	0.016	0.05	0.16	0.5		1.6		
200 mg	0.006	0.020	0.06	0.20	0.6		2.0		
500 mg	0.008	0.025	0.08	0.25	0.8		2.5		
1 g	0.010	0.030	0.10	0.3	1.0		3		10
2 g	0.012	0.040	0.12	0.4	1.2		4		12
5 g	0.016	0.050	0.16	0.5	1.6		5		16
10 g	0.020	0.060	0.20	0.6	2.0		6		20
20 g	0.025	0.080	0.25	0.8	2.5		8		25
50 g	0.030	0.10	0.30	1.0	3.0		10		30
100 g	0.05	0.16	0.5	1.6	5		16		50
200 g	0.10	0.30	1.0	3.0	10		30		100
500 g	0.25	0.8	2.5	8.0	25		80		250
1 kg	0.5	1.6	5	16	50		160		500
2 kg	1.0	3.0	10	30	100		300		1,000
5 kg	2.5	8.0	25	80	250		800		2,500
10 kg	5	16	50	160	500		1,600		5,000
20 kg	10	30	100	300	1,000		3,000		10,000
50 kg	25	80	250	800	2,500	5,000	8,000	16,000	25,000
100 kg		160	500	1,600	5,000	10,000	1,6000	30,000	50,000
200 kg		300	1,000	3,000	10,000	20,000	30,000	60,000	100,000
500 kg		800	2,500	8,000	25,000	50,000	80,000	160,000	250,000
1,000 kg		1,600	5,000	16,000	50,000	100,000	160,000	300,000	500,000
2,000 kg			10,000	30,000	100,000	200,000	300,000	600,000	1,000,000
5,000 kg			25,000	80,000	250,000	500,000	800,000	1,600,000	2,500,000



Weight Set Combinations

Range	Contents	mg	g	kg
1 mg – 500 mg Total contents: 1.11 g 12 units	1	■ □		
	2	■ □		
	5	■		
	10	■		
	20	■ □		
	50	■		
	100	■		
	200	■ □		
	500	■		
1 mg – 5 g Total contents: 11.11 g 16 units	1	■ □	■	
	2	■	■ □	
	5	■	■	
	10	■		
	20	■ □		
	50	■		
	100	■		
	200	■ □		
	500	■		
1 mg – 100 g Total contents: 211.11 g 21 units	1	■	■	
	2	■ □	■ □	
	5	■	■	
	10	■	■	
	20	■ □	■ □	
	50	■	■	
	100	■	■	
	200	■ □		
	500	■		

Range	Contents	mg	g	kg
1 mg – 200 g Total contents: 611.11 g 23 units	1	■	■	
	2	■ □	■ □	
	5	■	■	
	10	■	■	
	20	■ □	■ □	
	50	■	■	
	100	■	■	
	200	■ □	■ □	
	500	■		
1 mg – 1 kg Total contents: 2,111.11 g 25 units	1	■	■	■
	2	■ □	■ □	
	5	■	■	
	10	■	■	
	20	■ □	■ □	
	50	■	■	
	100	■	■	
	200	■ □	■ □	
	500	■	■	
1 mg – 5 kg Total contents: 11,111.11 g 28 units	1	■	■	■
	2	■ □	■ □	■ □
	5	■	■	■
	10	■	■	
	20	■ □	■ □	
	50	■	■	
	100	■	■	
	200	■ □	■ □	
	500	■	■	

Range	Contents	mg	g	kg
1 g–100 g	1		■	
Total contents:	2		■ □	
210 g	5		■	
9 units	10		■	
	20		■ □	
	50		■	
	100		■	
	200			
	500			
1 g–200 g	1		■	
Total contents:	2		■ □	
610 g	5		■	
11 units	10		■	
	20		■ □	
	50		■	
	100		■	
	200		■ □	
	500			
1 g–1 kg	1		■	■
Total contents:	2		■ □	
2,110 g	5		■	
13 units	10		■	
	20		■ □	
	50		■	
	100		■	
	200		■ □	
	500		■	

Range	Contents	mg	g	kg
1 g–5 kg	1		■	■
Total contents:	2		■ □	■ □
11,110 g	5		■	■
16 units	10		■	
	20		■ □	
	50		■	
	100		■	
	200		■ □	
	500		■	
1 g–10 kg	1		■	■
Total contents:	2		■ □	■ □
21,110 g	5		■	■
17 units	10		■	■
	20		■ □	
	50		■	
	100		■	
	200		■ □	
	500		■	

■ Weight without marking

□ Weight with marking

Germany

Sartorius Lab Instruments GmbH & Co. KG
Otto-Brenner-Strasse 20
37079 Goettingen
Phone +49 551 308 0

USA

Sartorius Corporation
565 Johnson Avenue
Bohemia, NY 11716
Phone +1 631 254 4249
Toll-free +1 800 635 2906



For further contacts, visit
www.sartorius.com

Representaciones de Centroamérica, S.A.

GUATEMALA

(502) 2461-2727
mercadeo@recasa.net

EL SALVADOR

(503) 2522-0638
(503) 2522-1926
infosv@recasa.net

COSTA RICA

(506) 4001-2965
infocr@recasa.net



recasa.com.gt



(502) 5536-6213



[recasagt](https://www.facebook.com/recasagt)

